

Away in a Manger

9

Musical staff for 'Away in a Manger' measures 1-9. The staff is in bass clef with a 3/4 time signature. It begins with a *mf* dynamic and ends with a *f* dynamic. The melody consists of quarter and eighth notes.

Musical staff for 'Away in a Manger' measures 10-33. It includes measure numbers 17, 15, and 33. The dynamics range from *mf* to *f*. The staff continues the melodic line with various note values and rests.

Musical staff for 'The First Noel' measures 41-49. It includes measure numbers 41, 8, and 16. The dynamics range from *mp* to *f*. The tempo marking *Rit.* is present above the staff.

Musical staff for 'The First Noel' measures 50-74. It includes measure numbers 65, 74, and *A tempo*. The dynamics range from *mf* to *f*. The tempo marking *Rit.* is present above the staff.

Musical staff for 'It Came Upon The Midnight Clear' measures 84-99. It includes measure number 84 and the dynamic *mp*. The tempo marking *Rit.* is present above the staff.

Musical staff for 'It Came Upon The Midnight Clear' measures 100-109. This staff continues the melodic line for the piece.

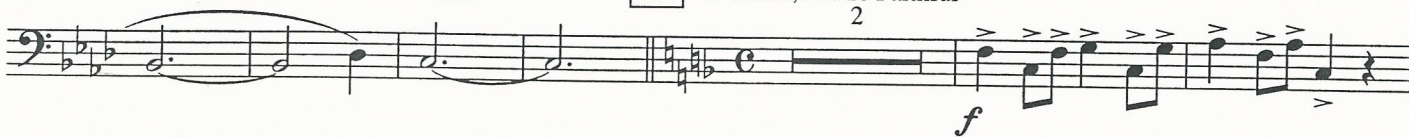
Musical staff for 'It Came Upon The Midnight Clear' measures 110-119. This staff concludes the piece with a final melodic phrase.



*Rit.*

124 O Come, All Ye Faithful

2



128



138



146 Hark! the Herald Angels Sing

2



155



166

2

*Molto Rit.*

