

TOON REVUE

(Looney Toons • The Simpsons • Tiny Toons Adventure • Inspector Gadget)

♭ TRUMPET 1

Arranged by DAVID MARSHALL

Animated "The Merry-Go-Round Broke Down"

Musical notation for the first system of "The Merry-Go-Round Broke Down". It features a treble clef, a key signature of one sharp (F#), and a 2/4 time signature. The music starts with a dynamic of *fp* and includes accents and slurs. A measure rest of 2 measures is indicated at the beginning.

Musical notation for the second system of "The Merry-Go-Round Broke Down". It continues with a treble clef, a key signature of one sharp, and a 2/4 time signature. A measure rest of 9 measures is indicated at the start, and another of 2 measures at the end.

Faster "The Simpsons"

Stagger breathing

Musical notation for the first system of "Faster The Simpsons". It features a treble clef, a key signature of one sharp, and a 4/4 time signature. The music starts with a dynamic of *ff* and includes slurs and accents. A measure rest of 17 measures is indicated at the start.

Solo (opt. Soli)

24 St. mute

All-open

Musical notation for the first system of the solo section. It features a treble clef, a key signature of two flats, and a 3/4 time signature. The music starts with a dynamic of *mf* and includes slurs and accents. A measure rest of 3 measures is indicated at the start.

Musical notation for the second system of the solo section. It continues with a treble clef, a key signature of two flats, and a 3/4 time signature. A measure rest of 3 measures is indicated at the start.

Opt. 8va ----- 42 Raucous!

Musical notation for the third system of the solo section. It features a treble clef, a key signature of two flats, and a 3/4 time signature. The music starts with a dynamic of *f* and includes slurs and accents. A measure rest of 6 measures is indicated at the start.

Wacky!

Musical notation for the fourth system of the solo section. It features a treble clef, a key signature of two flats, and a 3/4 time signature. The music starts with a dynamic of *rall.* and includes slurs and accents. A measure rest of 3 measures is indicated at the start.

4001063

THE MERRY-GO-ROUND BROKE DOWN
 Words and Music by Cliff Friend and Dave Franklin
 ©1937 WARNER BROS. INC. (Renewed)
 This arrangement ©1992 WARNER BROS. INC.
 All Rights Reserved

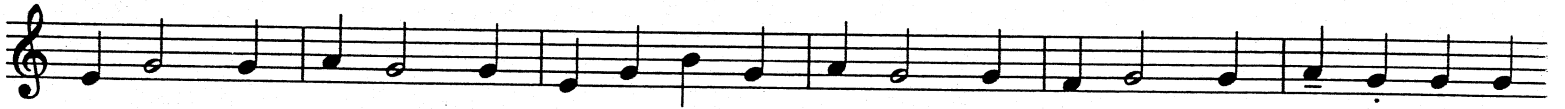
MERRILY WE ROLL ALONG
 By Eddie Cantor, Charlie Tobias and Murray Mencher
 ©1935 WARNER BROS. INC. (Renewed)
 This arrangement ©1992 WARNER BROS. INC.
 All Rights Reserved

THEME FROM "THE SIMPSONS"
 Music by Danny Elfman
 ©1990, 1992 FOX FILM MUSIC CORPORATION
 All Rights Reserved

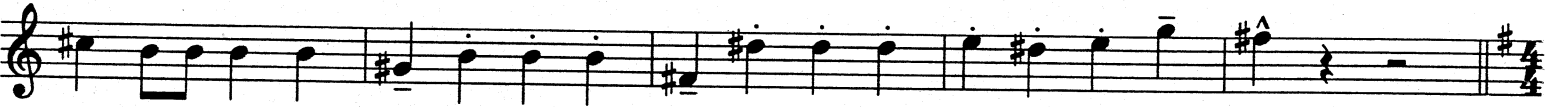
TINY TOON ADVENTURES THEME SONG
 Lyrics by Wayne Kaatz, Tom Ruedger and Bruce Broughton
 Music by Bruce Broughton
 ©1990, 1992 WB MUSIC CORP.
 All Rights Reserved

THEME FROM INSPECTOR GADGET (Animated Cartoon Series)
 Words and Music by Haim Saban and Shuki Levy
 ©1985, 1992 WB MUSIC CORP.
 All Rights Reserved

53 "Tiny Toons Adventure"

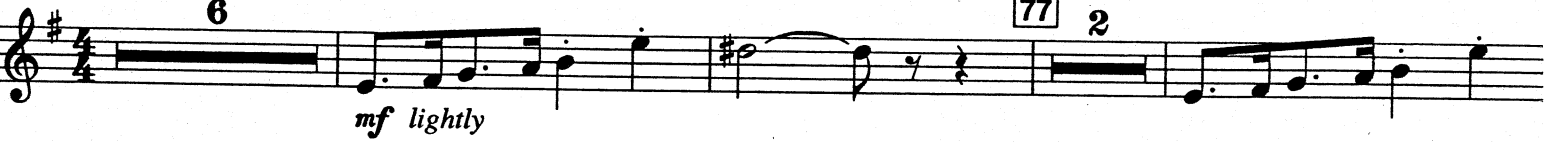


61



"Inspector Gadget"

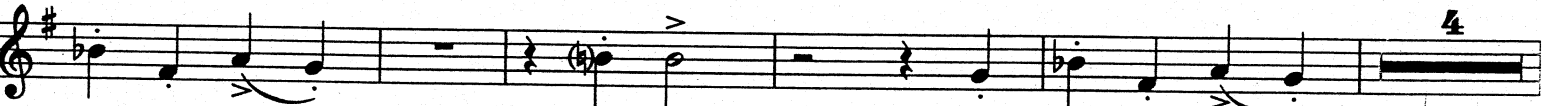
69 A Bit Faster (♩ = ♩³)



mf lightly

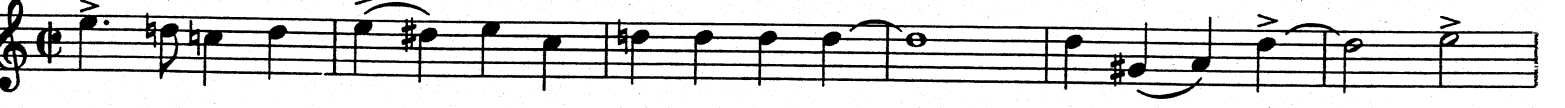
div.

85



99 "Merrily We Roll Along"

(♩ = ♩)



5-7-11-17
Bow
Shout: "That's all, folks!"