

Basson

TAM TI DELAM

(Gigues)

Musique: G. Vigneault /
G. Rochon / J-P. Bérubé
arr.: Marc Tremblay

♩ = 60 rit.

10 A B
♩ = 132

24 Meno mosso rit. A tempo C
2

34 D

40 rit.

46 E Meno mosso rit.

53 F ♩ = 108 G
11 5

73 H

Basson

81 *poco accel.*

88 **J** ♩=120
mf

94 **K**
f

100

106

112

118 **L**
mf

124

130

Basson

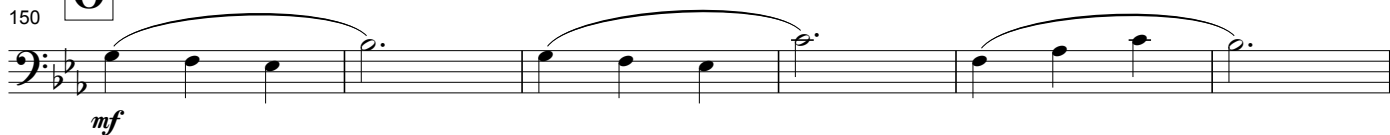
136 **M**



142 **N** $\text{♩} = 60$



150 **O**

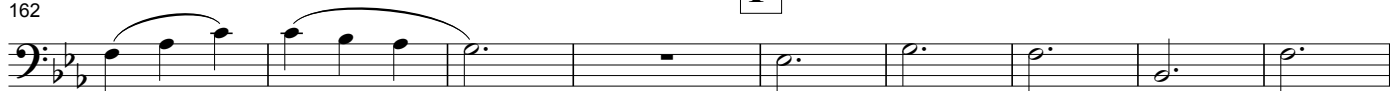


156



162

P

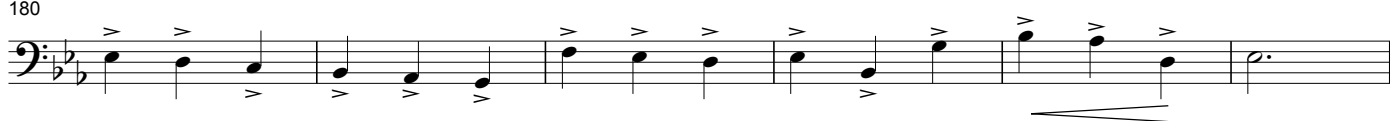


171



180

rit.



186

