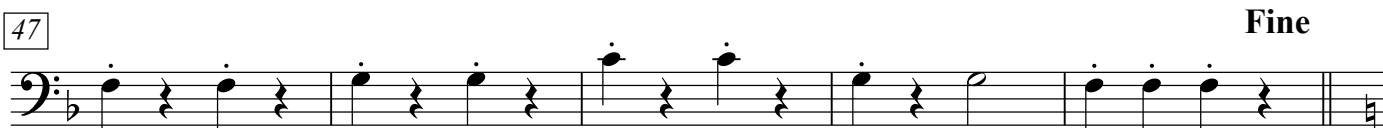
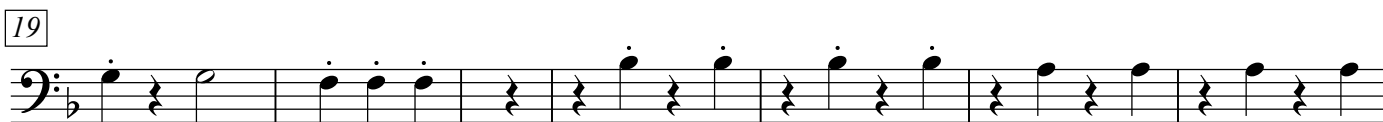
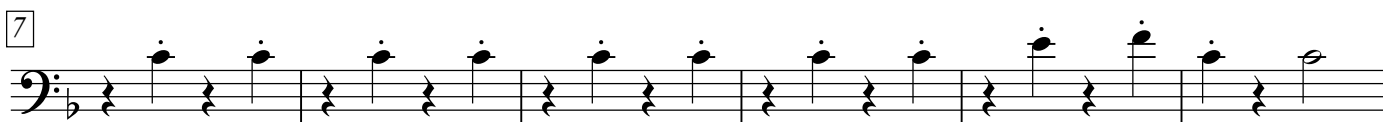


# Baritones

$\text{♩} = 110$



Baritones

52

Musical staff for bar 52, starting with a treble clef and a common time signature. The staff contains a sequence of notes: a dotted quarter note, followed by eighth notes, and a quarter note, ending with a repeat sign.

58

Musical staff for bar 58, featuring a first ending bracket over the final two measures.

64

Musical staff for bar 64, featuring a second ending bracket over the first three measures.

69

Musical staff for bar 69, containing a whole note followed by a half note.

75

Musical staff for bar 75, ending with a double bar line.

D.C. al Fine