

QUEEN IN CONCERT

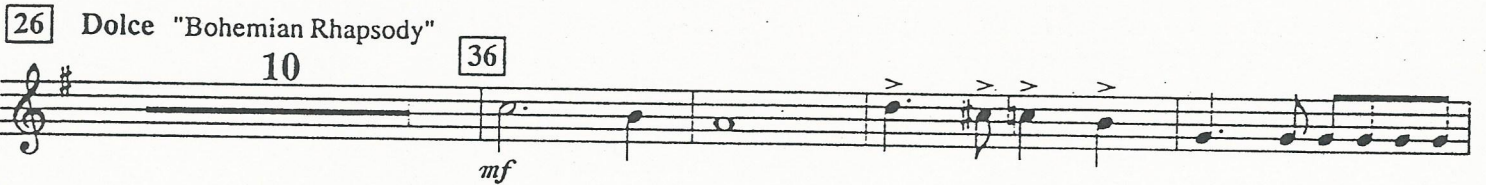
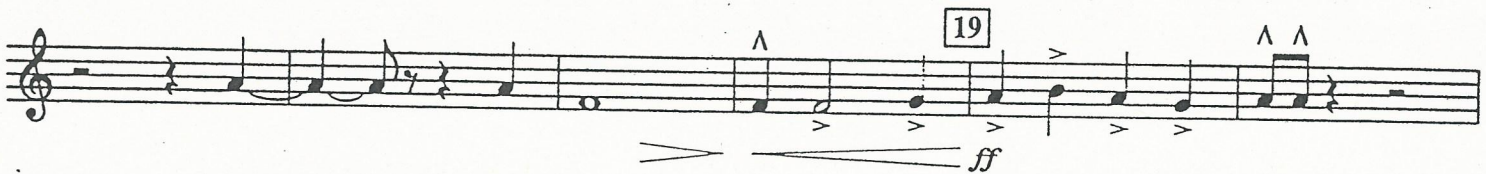
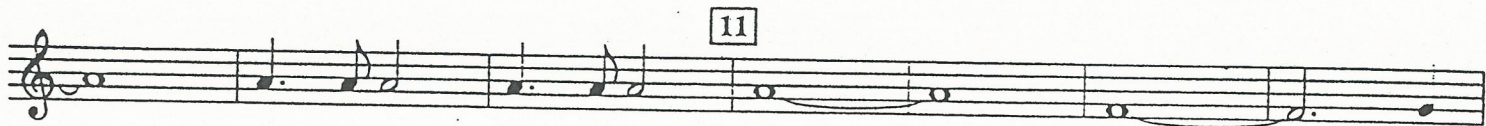
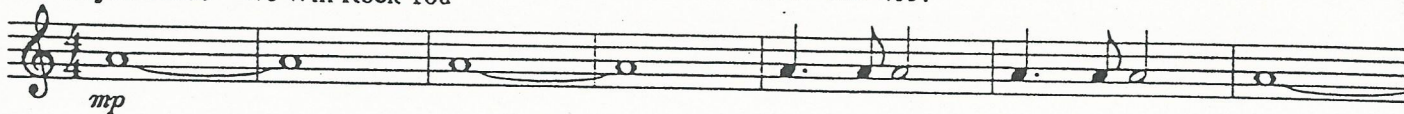
(We Will Rock You • Bohemian Rhapsody • Another One Bites The Dust • We Are The Champions)

E♭ BARITONE SAXOPHONE

ÉCOLE LE tandem
PAV. ALBERT-MORISSETTE
20, Ave. de l'Ermitage
VICTORIAVILLE, Qc. G6P 1J5
tél.: 752-4591

Arranged by JAY BOCOOK

Mysterioso "We Will Rock You"



WE WILL ROCK YOU
Words and Music by BRIAN MAY
© 1977 QUEEN MUSIC LTD.
This arrangement © 1996 QUEEN MUSIC LTD.
All Rights Controlled and Administered by BEECHWOOD MUSIC CORP.
All Rights Reserved International Copyright Secured Used by Permission

ANOTHER ONE BITES THE DUST
Words and Music by JOHN DEACON
© 1980 QUEEN MUSIC LTD.
This arrangement © 1996 QUEEN MUSIC LTD.
All Rights Controlled and Administered by BEECHWOOD MUSIC CORP.

BOHEMIAN RHAPSODY
Featured in the Motion Picture WAYNE'S WORLD
Words and Music by FREDDIE MERCURY
© 1975 B. FELDMAN & CO., LTD., Trading As TRIDENT MUSIC
This arrangement © 1996 B. FELDMAN & CO., LTD.,
Trading As TRIDENT MUSIC
All Rights Controlled and Administered by GLENWOOD MUSIC CORP.
All Rights Reserved International Copyright Secured Used by Permission

WE ARE THE CHAMPIONS
Words and Music by FREDDIE MERCURY
© 1977 QUEEN MUSIC LTD.
This arrangement © 1996 QUEEN MUSIC LTD.
All Rights Controlled and Administered by BEECHWOOD MUSIC CORP.

E♭ BARITONE SAXOPHONE

ÉCOLE LE tandem
PAV. ALBERT-MORISSETTE
20, Ave. de l'Érmitage
VICTORIAVILLE, Qc. G6P 1J5
tél.: 752-4591

51



58



68



79 Driving



88 Maestoso



E^b BARITONE SAXOPHONE

ÉCOLE LE tandem
PAV. ALBERT-MORISSETTE
20, Ave. de l'Érmitage
VICTORIAVILLE, Qc. G6P 1J5
tél.: 752-4591

2

99 Rock "Another One Bites The Dust"

Musical notation for the first piece, 'Another One Bites The Dust'. It consists of two staves of music. The first staff begins with a treble clef, a key signature of one flat (B-flat), and a 4/4 time signature. The music is marked with a dynamic of *mf*. The second staff continues the melody with similar rhythmic patterns.

109 Slowly
"We Are The Champions"

Musical notation for the second piece, 'We Are The Champions'. It consists of two staves. The first staff is marked with a dynamic of *f*. The second staff features a dynamic of *mp* and includes a fermata over a note. The key signature changes to two flats (B-flat and E-flat) in the second staff.

119

A single staff of musical notation for measure 119. The music is marked with a dynamic of *f* and includes several accents (>) over the notes.

128

A single staff of musical notation for measure 128. The music is marked with a dynamic of *ff* and includes several accents (>) over the notes.A single staff of musical notation continuing from measure 128. The music is marked with a dynamic of *mf* and includes several accents (>) over the notes.

140

A single staff of musical notation for measure 140. The music is marked with a dynamic of *f* and includes several accents (>) over the notes.

Very Slow

A single staff of musical notation for the 'Very Slow' section. The music is marked with a dynamic of *f* and includes several accents (>) over the notes.