

POP GO THE CLASSICS

PROPRIÉTÉ DE **(65)**
HARMONIE LACHINE
PROPERTY OF

Baritone T.C.

Arranged by Andrew Balent

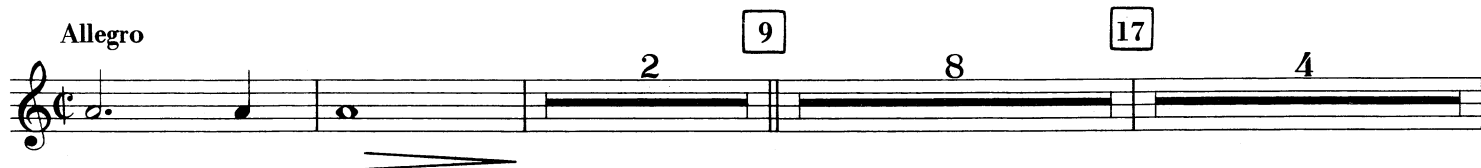
Maestoso

Piano Concerto No. 1 - Peter I. Tchaikowsky



Symphony No. 40 - W.A. Mozart

Allegro



31 *Rhapsody In Blue - George Gershwin



44 Symphony No. 5 - Ludwig Van Beethoven



Baritone T.C.

Musical staff with notes and dynamics. The staff is in treble clef with a key signature of one sharp (F#). It begins with a whole note G4, followed by a half note G4, and a quarter note G4. The next measure contains a quarter note G4, a quarter note A4, and a quarter note B4. The final measure contains a quarter note C5, a quarter note B4, and a quarter note A4. Dynamics include *f* and *Play*.

57 Eine Kleine Nachtmusik - W.A. Mozart

Musical staff with notes and dynamics. The staff is in treble clef with a key signature of one sharp (F#). It begins with a quarter note G4, followed by a quarter note A4, and a quarter note B4. The next measure contains a quarter note C5, a quarter note B4, and a quarter note A4. The final measure contains a quarter note G4, a quarter note F#4, and a quarter note E4. Dynamics include *mf* and a triplet of eighth notes.

61 Symphony No. 9 - Ludwig Van Beethoven

Musical staff with notes and dynamics. The staff is in treble clef with a key signature of one flat (Bb). It begins with a quarter note G4, followed by a quarter note A4, and a quarter note B4. The next measure contains a quarter note C5, a quarter note B4, and a quarter note A4. The final measure contains a quarter note G4, a quarter note F#4, and a quarter note E4. Dynamics include *f*.

Musical staff with notes and dynamics. The staff is in treble clef with a key signature of one flat (Bb). It begins with a quarter note G4, followed by a quarter note A4, and a quarter note B4. The next measure contains a quarter note C5, a quarter note B4, and a quarter note A4. The final measure contains a quarter note G4, a quarter note F#4, and a quarter note E4.

William Tell Overture - Gioacchino Antonio Rossini

Musical staff with notes and dynamics. The staff is in treble clef with a key signature of one flat (Bb). It begins with a whole note G4, followed by a whole note G4. The next measure contains a whole note G4. The final measure contains a quarter note G4, a quarter note A4, and a quarter note B4. Dynamics include *f* and fingerings 5, 74, 5, 1.

82

Musical staff with notes and dynamics. The staff is in treble clef with a key signature of one flat (Bb). It begins with a quarter note G4, followed by a quarter note A4, and a quarter note B4. The next measure contains a quarter note C5, a quarter note B4, and a quarter note A4. The final measure contains a quarter note G4, a quarter note F#4, and a quarter note E4. Dynamics include *sf*.

Musical staff with notes and dynamics. The staff is in treble clef with a key signature of one flat (Bb). It begins with a quarter note G4, followed by a quarter note A4, and a quarter note B4. The next measure contains a quarter note C5, a quarter note B4, and a quarter note A4. The final measure contains a quarter note G4, a quarter note F#4, and a quarter note E4.

Musical staff with notes and dynamics. The staff is in treble clef with a key signature of one flat (Bb). It begins with a quarter note G4, followed by a quarter note A4, and a quarter note B4. The next measure contains a quarter note C5, a quarter note B4, and a quarter note A4. The final measure contains a quarter note G4, a quarter note F#4, and a quarter note E4.