

# POP GO THE CLASSICS

PROPRIÉTÉ DE  
HARMONIE LACHINE  
PROPERTY OF

1st B $\flat$  Cornet

Arranged by Andrew Balent

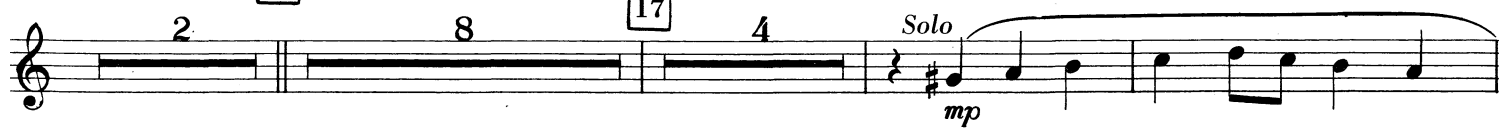
Maestoso

Piano Concerto No. 1 - Peter I. Tchaikowsky

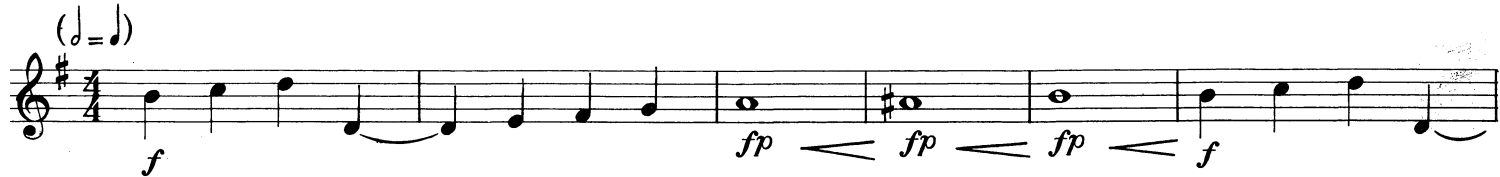
Allegro



9 Symphony No. 40 - W.A. Mozart



31 \*Rhapsody In Blue - George Gershwin



44 Symphony No. 5 - Ludwig Van Beethoven



57 Eine Kleine  
Nachtmusik -  
W.A. Mozart



1st B♭ Cornet

61 Symphony No. 9 - Ludwig Van Beethoven

Musical notation for measure 61 of Symphony No. 9 by Ludwig Van Beethoven. The staff begins with a treble clef and a key signature of one flat. A triplet of eighth notes is marked with a '3' above it. The music continues with a series of eighth and quarter notes, ending with a dynamic marking of *f* (forte).

69 William Tell Overture - Gioacchino Antonio Rossini

Musical notation for measure 69 of William Tell Overture by Gioacchino Antonio Rossini. The staff begins with a treble clef and a key signature of one flat. The music features a series of eighth notes, followed by a dynamic marking of *f* (forte) and accents (>) over several notes.

Musical notation for measures 70-73 of William Tell Overture by Gioacchino Antonio Rossini. The staff continues with eighth notes and quarter notes, featuring accents (>) over several notes.

74

Musical notation for measure 74 of William Tell Overture by Gioacchino Antonio Rossini. The staff begins with a treble clef and a key signature of one flat. It features a triplet of eighth notes marked with a '3' above it, followed by a dynamic marking of *f* (forte).

Musical notation for measures 75-81 of William Tell Overture by Gioacchino Antonio Rossini. The staff continues with eighth notes and quarter notes, ending with a first ending bracket marked with a '1' above it.

82

Musical notation for measure 82 of William Tell Overture by Gioacchino Antonio Rossini. The staff begins with a treble clef and a key signature of one flat. It features a dynamic marking of *sf* (sforzando) and accents (>) over several notes.

Musical notation for measures 83-89 of William Tell Overture by Gioacchino Antonio Rossini. The staff continues with eighth notes and quarter notes, ending with a fermata over the final note.