

A TOUCH OF JAZZ!

KIRKLAND CONCERT BAND

Featuring Cute, C Jam Blues, Li'l Darlin', Take Five, It Don't Mean A Thing
(If It Ain't Got That Swing), 'Round Midnight and The Swingin' Shepherd Blues

"Cute" - By NEAL HEFTI

"C Jam Blues" - By DUKE ELLINGTON

"Li'l Darlin'" - By NEAL HEFTI

"Take Five" - By PAUL DESMOND

"It Don't Mean A Thing (If It Ain't Got That Swing)" - By DUKE ELLINGTON and IRVING MILLS

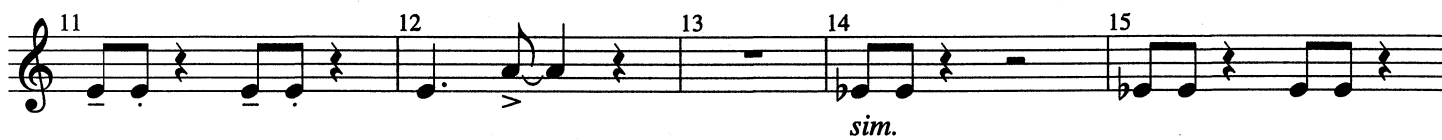
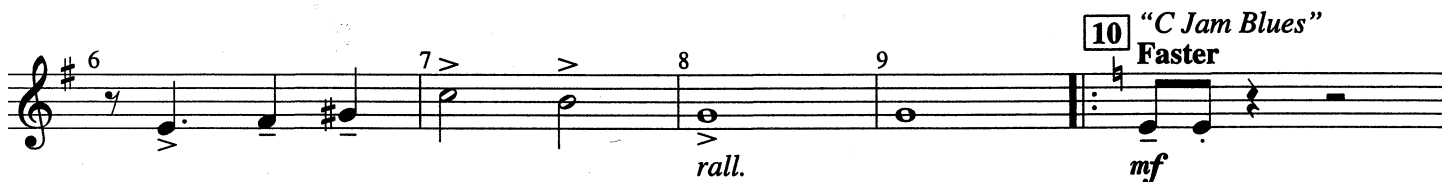
"Round Midnight" - Music by COOTIE WILLIAMS and THELONIOUS MONK

"The Swingin' Shepherd Blues" - Music by MOE KOFFMAN

Arranged by JERRY BRUBAKER

3RD B♭ CLARINET

"Cute" Moderate swing



"Cute" - © 1958 WB MUSIC CORP. (Renewed)

"C Jam Blues" - © 1942, 1943 EMI ROBBINS CATALOG INC.

"Li'l Darlin'" - © 1958 WB MUSIC CORP. (Renewed)

"Take Five" - © 1960 (Renewed 1988) DESMOND MUSIC COMPANY
All Rights outside the U.S.A. Controlled by DERRY MUSIC COMPANY

"It Don't Mean A Thing (If It Ain't Got That Swing)" -

© 1932 (Renewed 1960) EMI MILLS MUSIC, INC. and FAMOUS MUSIC CORPORATION
All Rights outside the U.S.A. Controlled by EMI MILLS MUSIC, INC. and WARNER BROS. PUBLICATIONS INC.

"Round Midnight" - © 1944 WARNER BROS. INC. and THELONIOUS MUSIC (Renewed)

"The Swingin' Shepherd Blues" -

Copyright © 1958 (Renewed) WINDSWEEP PACIFIC ENTERTAINMENT CO., d/b/a LONGITUDE MUSIC CO.
This arrangement © 1995 by WB MUSIC CORP., EMI ROBBINS CATALOG INC., DESMOND MUSIC COMPANY,
DERRY MUSIC COMPANY, EMI MILLS MUSIC INC., FAMOUS MUSIC CORPORATION, WARNER BROS. INC.,
THELONIOUS MUSIC, LONGITUDE MUSIC CO., WINDSWEEP PACIFIC ENTERTAINMENT CO.
and WARNER BROS. PUBLICATIONS INC. All Rights Reserved

3rd B♭ Clarinet - 2

37 38 39 40

41 42 43 44 45

46 47 48 49

50 "Take Five"

51 52 53

54 55 56 57

f *dim.* *mp*

58 59 60 61

62 63 64

65 66 67 68

69 70 71 72

"It Don't Mean A Thing"
(If It Ain't Got That Swing)

73 74 75 76 77 78-79 2

f *rall.*

3rd B♭ Clarinet - 3

81 "Round Midnight"

Musical score for the piece "Round Midnight". It consists of five staves of music. The first staff starts at measure 80 and ends at 84, featuring a melodic line with a dynamic marking of *mp*. The second staff covers measures 85 to 90. The third staff covers measures 91 to 96, including a first ending bracketed over measures 93-94 with a '3' above it. The fourth staff covers measures 97 to 101, including a second ending bracketed over measures 97-98 with a '2' above it. The key signature changes from one sharp (F#) to one flat (Bb) between measures 84 and 85.

104 "The Swingin' Shepherd Blues"

Musical score for the piece "The Swingin' Shepherd Blues". It consists of seven staves of music. The first staff starts at measure 102 and ends at 105, with dynamic markings of *fp*, *f*, and *dim.*. The second staff covers measures 106 to 108 with a dynamic marking of *mp*. The third staff covers measures 109 to 112. The fourth staff covers measures 113 to 117. The fifth staff covers measures 118 to 123, with a '2' above measure 119 and a dynamic marking of *ff* at the end. The sixth staff covers measures 124 to 129. The seventh staff covers measures 130 to 134, with a dynamic marking of *ff* at the end. The key signature changes from one flat (Bb) to one sharp (F#) between measures 112 and 113.