

# A TOUCH OF JAZZ!

Featuring Cute, C Jam Blues, Li'l Darlin', Take Five, It Don't Mean A Thing (If It Ain't Got That Swing), 'Round Midnight and The Swingin' Shepherd Blues

"Cute"- By NEAL HEFTI

"C Jam Blues"- By DUKE ELLINGTON

"Li'l Darlin'" - By NEAL HEFTI

"Take Five"- By PAUL DESMOND

"It Don't Mean A Thing (If It Ain't Got That Swing)" - By DUKE ELLINGTON and IRVING MILLS

"Round Midnight"- Music by COOTIE WILLIAMS and THELONIOUS MONK

"The Swingin' Shepherd Blues" - Music by MOE KOFFMAN

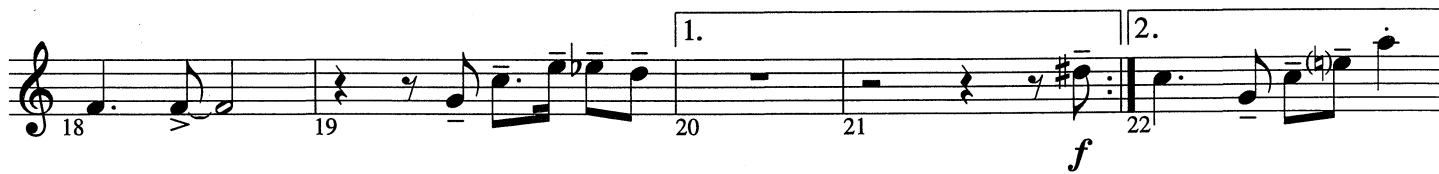
Arranged by JERRY BRUBAKER

## 1ST B♭ CLARINET

### "Cute" Moderate swing



### "C Jam Blues" 10 Faster 2nd time only



"Cute"- © 1958 WB MUSIC CORP. (Renewed)

"C Jam Blues"- © 1942, 1943 EMI ROBBINS CATALOG INC.

"Li'l Darlin'" - © 1958 WB MUSIC CORP. (Renewed)

"Take Five"- © 1960 (Renewed 1988) DESMOND MUSIC COMPANY

All Rights outside the U.S.A. Controlled by DERRY MUSIC COMPANY

"It Don't Mean A Thing (If It Ain't Got That Swing)" -

© 1932 (Renewed 1960) EMI MILLS MUSIC, INC. and FAMOUS MUSIC CORPORATION

All Rights outside the U.S.A. Controlled by EMI MILLS MUSIC, INC. and WARNER BROS. PUBLICATIONS INC.

"Round Midnight"- © 1944 WARNER BROS. INC. and THELONIOUS MUSIC (Renewed)

"The Swingin' Shepherd Blues" -

Copyright © 1958 (Renewed) WINDSWEPT PACIFIC ENTERTAINMENT CO., d/b/a LONGITUDE MUSIC CO.

This arrangement © 1995 by WB MUSIC CORP., EMI ROBBINS CATALOG INC., DESMOND MUSIC COMPANY,

DERRY MUSIC COMPANY, EMI MILLS MUSIC INC., FAMOUS MUSIC CORPORATION, WARNER BROS. INC.,

THELONIOUS MUSIC, LONGITUDE MUSIC CO., WINDSWEPT PACIFIC ENTERTAINMENT CO.

and WARNER BROS. PUBLICATIONS INC. All Rights Reserved

1st Bb Clarinet - 2

"Li'l Darlin'"

Slower  
7

29

37

50 "Take Five"

60

68

"It Don't Mean A Thing"  
(If It Ain't Got That Swing)

73

1st Bb Clarinet - 3

**81** "Round Midnight"

Musical staff 1 for "Round Midnight", measures 80-84. Measure 80 starts with a treble clef, a key signature of one sharp (F#), and a common time signature. The melody begins with a quarter rest, followed by a quarter note G4, a quarter note A4, and a quarter note B4. A repeat sign follows. The melody continues with a quarter note G4, a quarter note F#4, a quarter note E4, and a quarter note D4. A dynamic marking of *mp* is placed below the staff. The staff ends with a quarter note C4, a quarter note B3, and a quarter note A3.

Musical staff 2 for "Round Midnight", measures 85-89. Measure 85 starts with a treble clef, a key signature of one flat (Bb), and a common time signature. The melody begins with a quarter note G3, a quarter note A3, and a quarter note B3. A dynamic marking of *f* is placed below the staff. The staff ends with a quarter note C4, a quarter note B3, and a quarter note A3.

Musical staff 3 for "Round Midnight", measures 90-96. Measure 90 starts with a treble clef, a key signature of one flat (Bb), and a common time signature. The melody begins with a quarter note G3, a quarter note A3, and a quarter note B3. A first ending bracket labeled "1." spans measures 93-94. The staff ends with a quarter note C4, a quarter note B3, and a quarter note A3.

Musical staff 4 for "Round Midnight", measures 97-101. Measure 97 starts with a treble clef, a key signature of one flat (Bb), and a common time signature. The melody begins with a quarter note G3, a quarter note A3, and a quarter note B3. The staff ends with a quarter note C4, a quarter note B3, and a quarter note A3.

**104** "The Swingin' Shepherd Blues"

Musical staff 1 for "The Swingin' Shepherd Blues", measures 102-106. Measure 102 starts with a treble clef, a key signature of one flat (Bb), and a common time signature. The melody begins with a quarter note G3, a quarter note A3, and a quarter note B3. A dynamic marking of *fp* is placed below the staff. The staff ends with a quarter note C4, a quarter note B3, and a quarter note A3.

Musical staff 2 for "The Swingin' Shepherd Blues", measures 107-110. Measure 107 starts with a treble clef, a key signature of one flat (Bb), and a common time signature. The melody begins with a quarter note G3, a quarter note A3, and a quarter note B3. A dynamic marking of *sim.* is placed above the staff. A triplet of eighth notes is marked with a "3" above it. The staff ends with a quarter note C4, a quarter note B3, and a quarter note A3.

Musical staff 3 for "The Swingin' Shepherd Blues", measures 111-114. Measure 111 starts with a treble clef, a key signature of one flat (Bb), and a common time signature. The melody begins with a quarter note G3, a quarter note A3, and a quarter note B3. The staff ends with a quarter note C4, a quarter note B3, and a quarter note A3.

Musical staff 4 for "The Swingin' Shepherd Blues", measures 115-117. Measure 115 starts with a treble clef, a key signature of one flat (Bb), and a common time signature. The melody begins with a quarter note G3, a quarter note A3, and a quarter note B3. A triplet of eighth notes is marked with a "3" above it. The staff ends with a quarter note C4, a quarter note B3, and a quarter note A3.

**118** 3

118-120

**121**

Musical staff 5 for "The Swingin' Shepherd Blues", measures 122-125. Measure 122 starts with a treble clef, a key signature of one flat (Bb), and a common time signature. The melody begins with a quarter note G3, a quarter note A3, and a quarter note B3. The staff ends with a quarter note C4, a quarter note B3, and a quarter note A3.

Musical staff 6 for "The Swingin' Shepherd Blues", measures 126-129. Measure 126 starts with a treble clef, a key signature of one flat (Bb), and a common time signature. The melody begins with a quarter note G3, a quarter note A3, and a quarter note B3. A triplet of eighth notes is marked with a "3" above it. The staff ends with a quarter note C4, a quarter note B3, and a quarter note A3.

**130**

Musical staff 7 for "The Swingin' Shepherd Blues", measures 131-134. Measure 131 starts with a treble clef, a key signature of one flat (Bb), and a common time signature. The melody begins with a quarter note G3, a quarter note A3, and a quarter note B3. A dynamic marking of *ff* is placed below the staff. The staff ends with a quarter note C4, a quarter note B3, and a quarter note A3.