

# A TOUCH OF JAZZ!

KIRKLAND CONCERT BAND

Featuring Cute, C Jam Blues, Li'l Darlin', Take Five, It Don't Mean A Thing  
(If It Ain't Got That Swing), 'Round Midnight and The Swingin' Shepherd Blues

"Cute" - By NEAL HEFTI

"C Jam Blues" - By DUKE ELLINGTON

"Li'l Darlin'" - By NEAL HEFTI

"Take Five" - By PAUL DESMOND

"It Don't Mean A Thing (If It Ain't Got That Swing)" - By DUKE ELLINGTON and IRVING MILLS

"Round Midnight" - Music by COOTIE WILLIAMS and THELONIUS MONK

"The Swingin' Shepherd Blues" - Music by MOE KOFFMAN

Arranged by JERRY BRUBAKER

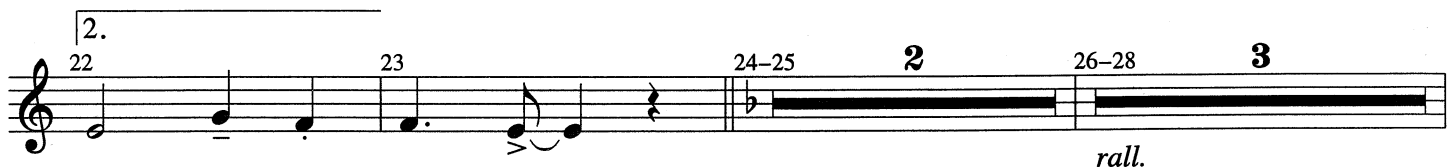
BARITONE T. C.

## "Cute" Moderate swing



## "C Jam Blues"

10 Faster



"Cute" - © 1958 WB MUSIC CORP. (Renewed)

"C Jam Blues" - © 1942, 1943 EMI ROBBINS CATALOG INC.

"Li'l Darlin'" - © 1958 WB MUSIC CORP. (Renewed)

"Take Five" - © 1960 (Renewed 1988) DESMOND MUSIC COMPANY

All Rights outside the U.S.A. Controlled by DERRY MUSIC COMPANY

"It Don't Mean A Thing (If It Ain't Got That Swing)" -

© 1932 (Renewed 1960) EMI MILLS MUSIC, INC. and FAMOUS MUSIC CORPORATION

All Rights outside the U.S.A. Controlled by EMI MILLS MUSIC, INC. and WARNER BROS. PUBLICATIONS INC.

"Round Midnight" - © 1944 WARNER BROS. INC. and THELONIUS MUSIC (Renewed)

"The Swingin' Shepherd Blues" -

Copyright © 1958 (Renewed) WINDSWEPT PACIFIC ENTERTAINMENT CO., d/b/a LONGITUDE MUSIC CO.

This arrangement © 1995 by WB MUSIC CORP., EMI ROBBINS CATALOG INC., DESMOND MUSIC COMPANY,

DERRY MUSIC COMPANY, EMI MILLS MUSIC INC., FAMOUS MUSIC CORPORATION, WARNER BROS. INC.,

THELONIUS MUSIC, LONGITUDE MUSIC CO., WINDSWEPT PACIFIC ENTERTAINMENT CO.

and WARNER BROS. PUBLICATIONS INC. All Rights Reserved



81 "Round Midnight"

Musical score for "Round Midnight" in B-flat major, 4/4 time. The score consists of nine staves of music. The first staff (measures 81-86) begins with a double bar line and a repeat sign, followed by a *mp* dynamic marking. The second staff (measures 87-92) continues the melody. The third staff (measures 93-97) features a first ending (1.) with a triplet of eighth notes and a second ending (2.) leading to a repeat sign. The fourth staff (measures 98-103) concludes the piece with a *fp* dynamic marking.

104 "The Swingin' Shepherd Blues"

Musical score for "The Swingin' Shepherd Blues" in B-flat major, 4/4 time. The score consists of nine staves of music. The first staff (measures 104-107) starts with a *f* dynamic, followed by a *dim.* marking and a *mp* marking. The second staff (measures 108-112) continues the melody. The third staff (measures 113-116) features a triplet of eighth notes. The fourth staff (measures 117-120) includes a *f* dynamic and accents. The fifth staff (measures 121-125) features a triplet of eighth notes. The sixth staff (measures 126-129) includes a triplet of eighth notes. The seventh staff (measures 130-134) concludes the piece with a *ff* dynamic marking.