

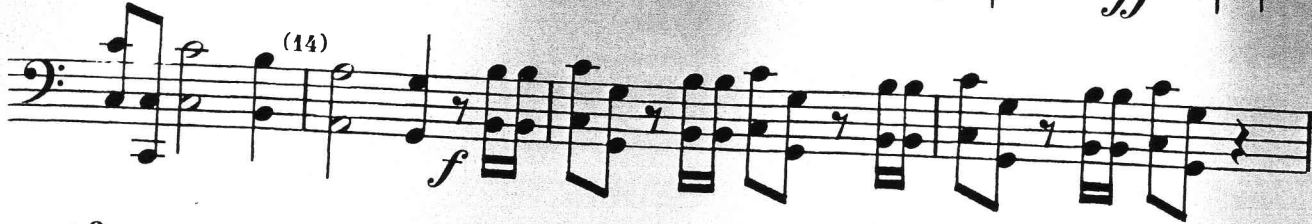
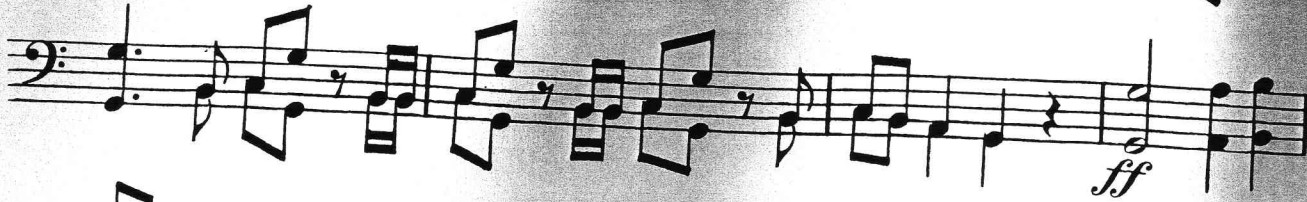
# Hallelujah Chorus from "The Messiah"

1st & 2nd Bassoons

G. F. HANDEL  
Arr. by Clair W. Johnson

Allegro

*a 2*



Rubank, Inc., Chicago, Ill.

1st & 2nd Bassoons

First musical staff in bass clef, containing a sequence of eighth and sixteenth notes with rests.

Second musical staff in bass clef, starting with measure (51) and ending with a forte (*f*) dynamic marking.

Third musical staff in bass clef, featuring a complex rhythmic pattern with many sixteenth notes.

Fourth musical staff in bass clef, continuing the rhythmic pattern with eighth and sixteenth notes.

Fifth musical staff in bass clef, featuring a complex rhythmic pattern with many sixteenth notes.

Sixth musical staff in bass clef, starting with measure (67) and including dynamics *ff* and *f*.

Seventh musical staff in bass clef, starting with measure (75) and including a forte (*ff*) dynamic marking.

Eighth musical staff in bass clef, continuing the rhythmic pattern with eighth and sixteenth notes.

Ninth musical staff in bass clef, starting with measure (81) and featuring a sequence of eighth notes.

Tenth musical staff in bass clef, continuing the sequence of eighth notes.

Eleventh musical staff in bass clef, concluding the piece with a final chord and a double bar line.