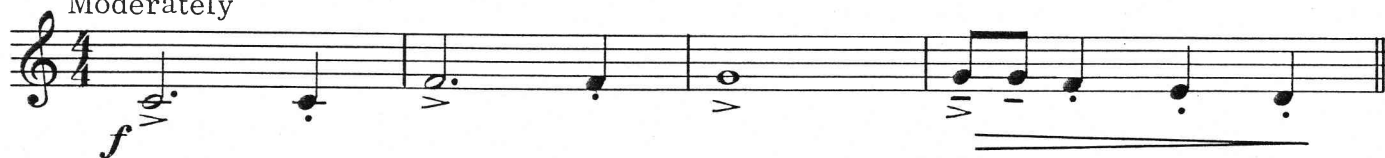


CHRISTMAS POPS MEDLEY

$E\flat$ BARITONE SAXOPHONE

Arranged by JOHN TATGENHORST

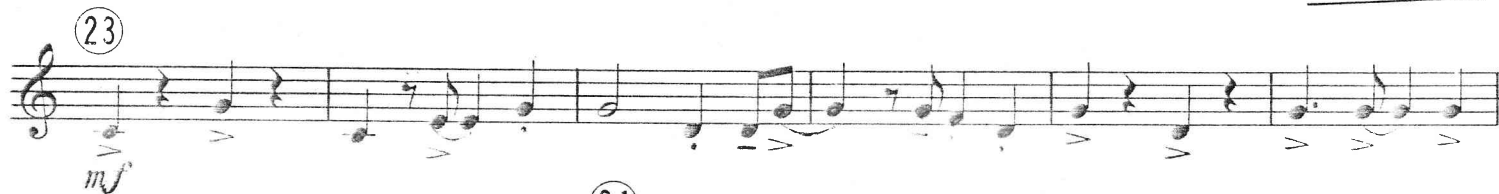
Moderately



"ROCKIN' AROUND THE CHRISTMAS TREE"

By Johnny Marks

5

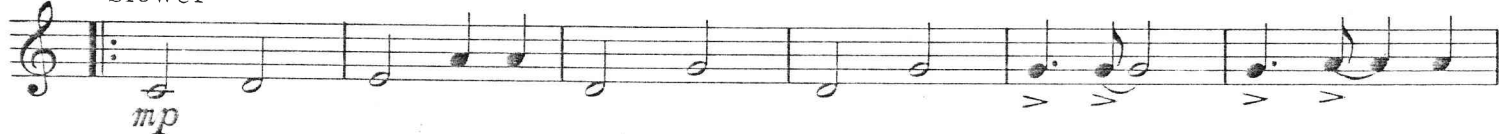


"WINTER WONDERLAND"

By Dick Smith and Felix Bernard

35

Slower



"Rockin' Around The Christmas Tree" Copyright © 1958 by St. Nicholas Music, Inc., New York, N.Y.
"Rudolph The Red-Nosed Reindeer" Copyright © 1949 by St. Nicholas Music, Inc., New York, N.Y. Renewed 1977
This arrangement Copyright © 1976 by St. Nicholas Music, Inc. Used by Permission
"Winter Wonderland" © 1934, 1961 WB MUSIC CORP. Copyright Renewed

All Rights Reserved

"Jingle Bells" Copyright © 1976 by Columbia Pictures Publications, Hialeah, Fla.

International Copyright Secured

Made in U.S.A.

All Rights Reserved

E♭ BARITONE SAXOPHONE - 2

52

mp

mf

molto rit.

Detailed description: This block contains two staves of music. The first staff starts at measure 52 and ends with a dynamic marking of *mp*. The second staff continues from measure 53 and ends with a dynamic marking of *mf* and a tempo marking of *molto rit.*

59

Moderate Rock Tempo

"RUDOLPH THE RED-NOSED REINDEER"

By Johnny Marks

61

1.

2.

71

79

f

mf

Detailed description: This block contains six staves of music for the song "Rudolph the Red-Nosed Reindeer". It begins at measure 59 with the tempo marking "Moderate Rock Tempo". Measure numbers 61, 71, and 79 are indicated. The first staff has a first ending bracket. The second staff has a second ending bracket. Dynamic markings include *f* and *mf*.

"JINGLE BELLS"

Traditional

86

1.

2.

f

ff

Detailed description: This block contains three staves of music for the song "Jingle Bells". It begins at measure 86. The first staff has a dynamic marking of *f*. The second staff has a first ending bracket and a dynamic marking of *ff*. The third staff has a second ending bracket and a dynamic marking of *ff*. There is a handwritten note above the second staff that reads "Pia > Sol > Solo".