

# CHRISTMAS POPS MEDLEY

2nd E $\flat$  ALTO SAXOPHONE

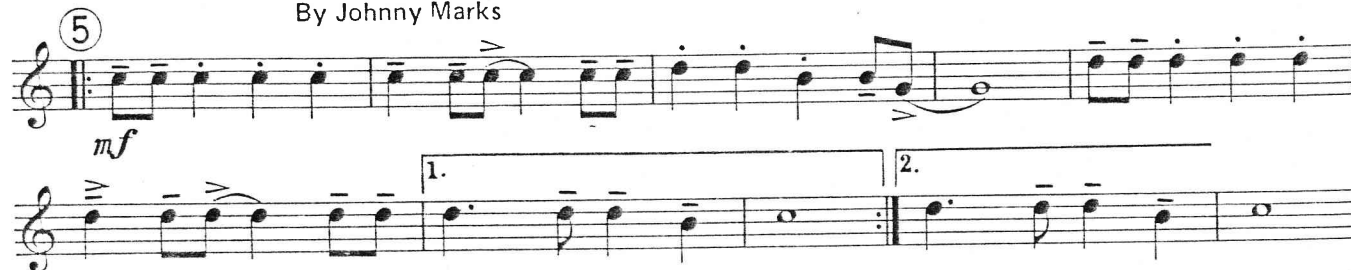
Arranged by JOHN TATGENHORST

Moderately



## "ROCKIN' AROUND THE CHRISTMAS TREE"

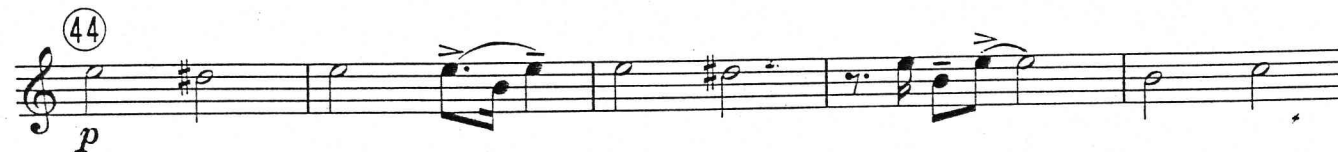
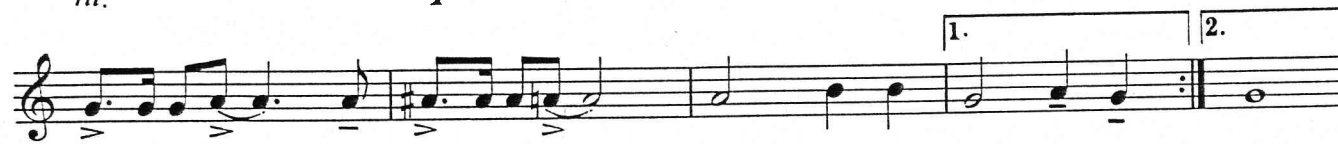
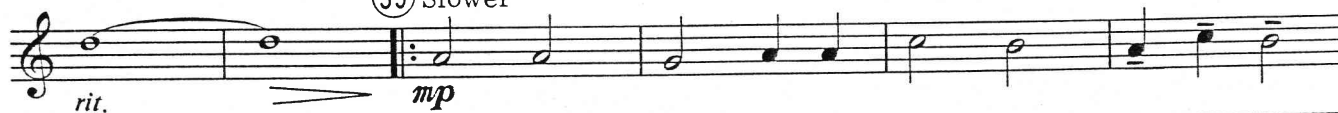
By Johnny Marks



## "WINTER WONDERLAND"

By Dick Smith and Felix Bernard

Slower



"Rockin' Around The Christmas Tree" Copyright © 1958 by St. Nicholas Music, Inc., New York, N.Y.  
"Rudolph The Red-Nosed Reindeer" Copyright © 1949 by St. Nicholas Music, Inc., New York, N.Y. Renewed 1977  
This arrangement Copyright © 1976 by St. Nicholas Music, Inc. Used by Permission  
"Winter Wonderland" © 1934, 1961 WB MUSIC CORP. Copyright Renewed  
All Rights Reserved

"Jingle Bells" Copyright © 1976 by Columbia Pictures Publications, Hialeah, Fla.  
International Copyright Secured Made in U.S.A.

All Rights Reserved

2nd E $\flat$  ALTO SAXOPHONE - 2

52 *mp*

59 Moderate Rock Tempo

*mf* *molto rit.*

"RUDOLPH THE RED-NOSED REINDEER"

By Johnny Marks

61 *mf*

1. 2.

71 *f*

79 6

"JINGLE BELLS"

Traditional

86 *f*

1. *ff*

2. *ff*