

CHRISTMAS POPS MEDLEY

1st Eb ALTO SAXOPHONE

Arranged by JOHN TATGENHORST

Moderately



"ROCKIN' AROUND THE CHRISTMAS TREE"

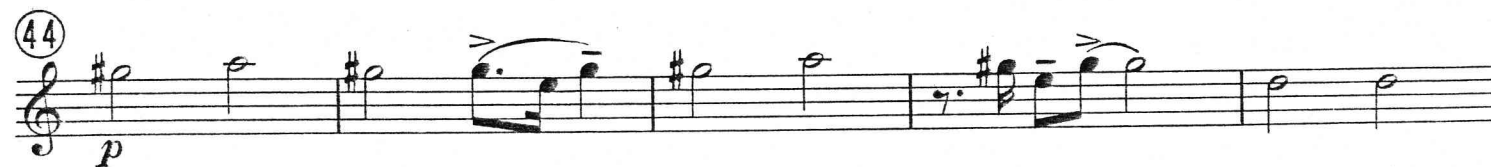
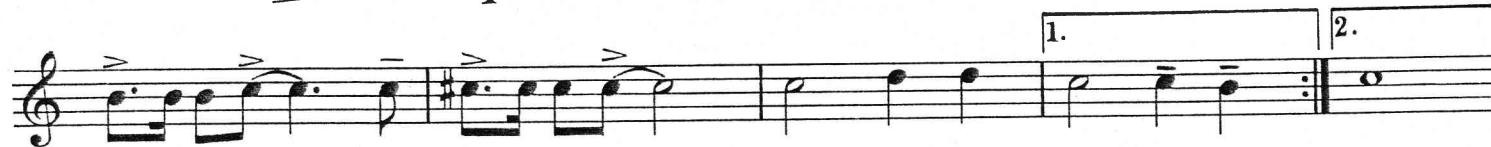
By Johnny Marks



"WINTER WONDERLAND"

By Dick Smith and Felix Bernard

Slower



"Rockin' Around The Christmas Tree" Copyright © 1958 by St. Nicholas Music, Inc., New York, N.Y.
"Rudolph The Red-Nosed Reindeer" Copyright © 1949 by St. Nicholas Music, Inc., New York, N.Y. Renewed 1977
This arrangement Copyright © 1976 by St. Nicholas Music, Inc. Used by Permission

"Winter Wonderland" © 1934, 1961 WB MUSIC CORP. Copyright Renewed
All Rights Reserved

"Jingle Bells" Copyright © 1976 by Columbia Pictures Publications, Hialeah, Fla.

International Copyright Secured

Made in U.S.A.

All Rights Reserved

1st $E\flat$ ALTO SAXOPHONE - 2

Musical notation for the first system of "Rudolph the Red-nosed Reindeer". It consists of two staves. The first staff begins with a circled measure number 52 and includes a dynamic marking of *mp*. The second staff begins with a circled measure number 59 and includes the tempo marking "Moderate Rock Tempo". The second staff also features dynamic markings of *mf* and *molto rit.*

"RUDOLPH THE RED-NOSED REINDEER"
By Johnny Marks

Musical notation for the second system of "Rudolph the Red-nosed Reindeer". It consists of three staves. The first staff begins with a circled measure number 61. The second staff contains first and second endings, marked with "1." and "2.". The third staff begins with a circled measure number 71 and includes a dynamic marking of *f*. The system concludes with a circled measure number 79 and a six-measure rest, indicated by the number "6".

"JINGLE BELLS"
Traditional

Musical notation for the third system of "Jingle Bells". It consists of three staves. The first staff begins with a circled measure number 86 and includes a dynamic marking of *f*. The second staff includes a dynamic marking of *ff* and a first ending marked with "1.". The third staff includes a dynamic marking of *ff* and a second ending marked with "2.". The notation includes various articulation marks such as accents and slurs.