

Highlights from THE SOUND OF MUSIC

ART TO THE
LAKESHORE
CONCERT BAND

Music by RICHARD RODGERS
Lyrics by OSCAR HAMMERSTEIN II

Arranged for Band by
HOWARD CABLE

B♭ Bass Clarinet

Impressively (with a broad 'two)

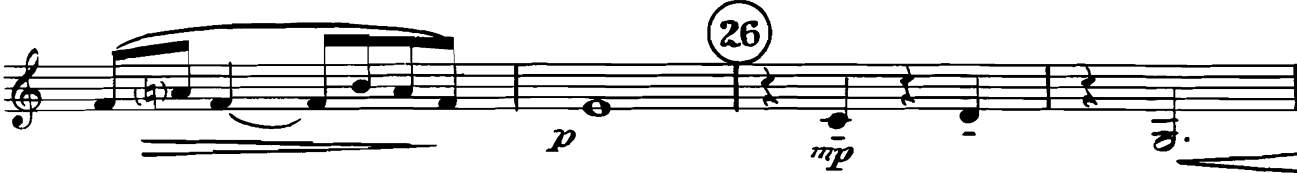


Hurry along

Broaden



Moderately (with deep feeling)



34 accel.



Broaden out

42 Majestically



50 Bright



Copyright © 1959 by Richard Rodgers and Oscar Hammerstein II
Copyright © 1961 by Richard Rodgers and Dorothy Hammerstein,
William Hammerstein and Howard E. Reinheimer as Executors of the Estate of Oscar Hammerstein II dec d.
Williamson Music, Inc., New York, N. Y., owner of publication and allied rights for all countries of the Western Hemisphere
International Copyright Secured
Made in U.S.A.
ALL RIGHTS RESERVED including public performance for profit

Any arrangement or adaptation of this composition without the consent of the owner is an infringement of copyright.

Bb Bass Clarinet

56

p

mp

72

f *p subito*

mp *mf* 4

88

Optional repeat (for Choral)

104

Musical staff with notes and dynamics. The staff contains a sequence of notes with slurs and accents. The dynamic marking *mf* is present below the staff.

(120) *Slowly in 3, then gradually faster*

Musical staff with notes, dynamics, and a 3/4 time signature change. The staff starts with notes in 2/4 time, then changes to 3/4 time. Dynamics include *p*, *f*, and *p*. There are slurs and accents throughout.

in 1 3 *ct. ten.* (129) *Liltingly (not too fast)*

Musical staff with notes, dynamics, and a 3/4 time signature. The staff begins with a first ending bracket labeled '1' and '3'. Dynamics include *p*. There are slurs and accents.

Musical staff with notes and dynamics. The staff contains a sequence of notes with slurs and accents. The dynamic marking *mf* is present below the staff.

(145)

Musical staff with notes and dynamics. The staff contains a sequence of notes with slurs and accents. The dynamic marking *f* is present below the staff.

Musical staff with notes and dynamics. The staff contains a sequence of notes with slurs and accents.

(159)

Musical staff with notes and dynamics. The staff contains a sequence of notes with slurs and accents. The dynamic marking *ff* is present below the staff.

Musical staff with notes and dynamics. The staff contains a sequence of notes with slurs and accents. The dynamic marking *p* is present below the staff.

(171)

Musical staff with notes and dynamics. The staff contains a sequence of notes with slurs and accents. Dynamics include *mf* and *f*.

Bb Bass Clarinet

179 *Broaden into 3*

Musical staff with notes and dynamics including *pp*.

187 *Lyrical*

Musical staff with notes and dynamics including *p*.

195

Musical staff with notes and dynamics.

203 *accel.*

Musical staff with notes and dynamics including *mf*.

211 *Move along*

Musical staff with notes and dynamics including *mf*.

Broaden

Musical staff with notes and dynamics including *f*.

219

rall. p a tempo

Musical staff with notes and dynamics including *f*.

227

Musical staff with notes and dynamics including *f*.

Broaden

Musical staff with notes and dynamics including *ff*, *sfz*, and *sf*.