

THE BOYS FROM LIVERPOOL

(A LENNON and McCARTNEY MONTAGE)

2nd F HORN

Arranged by JERRY BILIK

Moderate

ff

10

(♩ = ♩) Slightly faster

6

22 Eleanor Rigby
Soli

ff

38

p

7

p

3

54 A Hard Day's Night

f

71

f

ELEANOR RIGBY

© Copyright 1966 Northern Songs Ltd. All Rights for the U.S.A. & Canada controlled by Maclen Music, Inc. c/o ATV Music Group All Rights Reserved

A HARD DAY'S NIGHT

© Copyright 1964 Northern Songs Ltd. All Rights for the U.S.A. & Canada controlled by Maclen Music, Inc. c/o ATV Music Group All Rights Reserved

YESTERDAY

© Copyright 1965 Northern Songs Ltd. All Rights for the U.S.A. & Canada controlled by Maclen Music, Inc. c/o ATV Music Group All Rights Reserved

OB-LA-DI, OB-LA-DA

© Copyright 1968 Northern Songs Ltd. All Rights for the U.S.A. & Canada controlled by Maclen Music, Inc. c/o ATV Music Group All Rights Reserved

SGT. PEPPER'S LONELY HEARTS CLUB BAND

© Copyright 1967 Northern Songs Ltd. All Rights for the U.S.A. & Canada controlled by Maclen Music, Inc. c/o ATV Music Group All Rights Reserved

HEY JUDE

© Copyright 1968 Northern Songs Ltd. All Rights for the U.S.A. & Canada controlled by Maclen Music, Inc. c/o ATV Music Group All Rights Reserved

LADY MADONNA

© Copyright 1968 Northern Songs Ltd. All Rights for the U.S.A. & Canada controlled by Maclen Music, Inc. c/o ATV Music Group All Rights Reserved

WHEN I'M SIXTY-FOUR

© Copyright 1967 Northern Songs Ltd. All Rights for the U.S.A. & Canada controlled by Maclen Music, Inc. c/o ATV Music Group All Rights Reserved

2nd F Horn

87

1

98 (♩ = ♩) in 4 (not too slow)

2

rit.

rit.

mp

rit.

106 Yesterday Faster (Mod. 4) 6

1

115 Expressive (Freely)

mp

f

122

7

131 Bright, Relaxed 2

f

ff

139 Ob-la-di, Ob-la-da 15

154 3

1 2

f

163 Sgt. Pepper's Lonely Hearts Club Band

ff

181

2nd F Horn

191 Suddenly Slow, Almost Half-time



199 Hey Jude

6



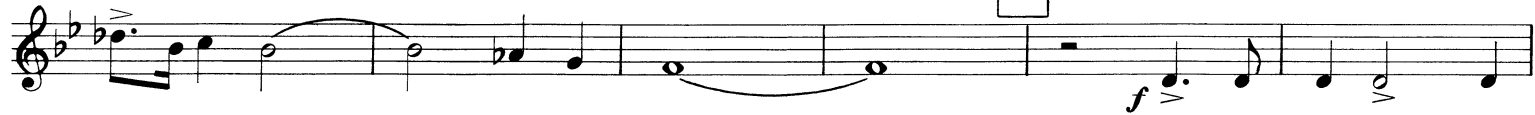
215

mf



231

f



Keep getting louder



247

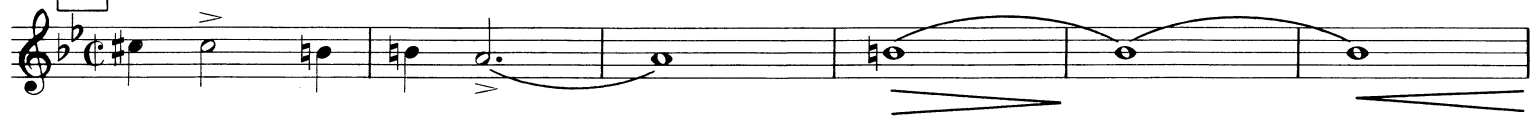


(d = d)

fff



259



fff



271

5

