

THE BOYS FROM LIVERPOOL

(A LENNON and McCARTNEY MONTAGE)

1st F HORN

Arranged by JERRY BILIK

Moderate

10

22 *Eleanor Rigby*
Soli
ff

38

7 3

54 *A Hard Day's Night*
f

71

ELEANOR RIGBY

© Copyright 1966 Northern Songs Ltd. All Rights for the U.S.A. & Canada controlled by Maclen Music, Inc. c/o ATV Music Group
All Rights Reserved

A HARD DAY'S NIGHT

© Copyright 1964 Northern Songs Ltd. All Rights for the U.S.A. & Canada controlled by Maclen Music, Inc. c/o ATV Music Group
All Rights Reserved

YESTERDAY

© Copyright 1965 Northern Songs Ltd. All Rights for the U.S.A. & Canada controlled by Maclen Music, Inc. c/o ATV Music Group
All Rights Reserved

OB-LA-DI, OB-LA-DA

© Copyright 1968 Northern Songs Ltd. All Rights for the U.S.A. & Canada controlled by Maclen Music, Inc. c/o ATV Music Group
All Rights Reserved

SGT. PEPPER'S LONELY HEARTS CLUB BAND

© Copyright 1967 Northern Songs Ltd. All Rights for the U.S.A. & Canada controlled by Maclen Music, Inc. c/o ATV Music Group
All Rights Reserved

HEY JUDE

© Copyright 1968 Northern Songs Ltd. All Rights for the U.S.A. & Canada controlled by Maclen Music, Inc. c/o ATV Music Group
All Rights Reserved

LADY MADONNA

© Copyright 1968 Northern Songs Ltd. All Rights for the U.S.A. & Canada controlled by Maclen Music, Inc. c/o ATV Music Group
All Rights Reserved

WHEN I'M SIXTY-FOUR

© Copyright 1967 Northern Songs Ltd. All Rights for the U.S.A. & Canada controlled by Maclen Music, Inc. c/o ATV Music Group
All Rights Reserved

1st F Horn

87 *f*

1 2 *rit.*

98 (♩ = ♩) in 4 (not too slow)

Solo *ff* *mp*

106 Yesterday Faster (Mod. 4) *p* 4 1

115 Expressive (Freely) *mp* *f*

122 *p* 5

131 Bright, Relaxed 2 *mf*

139 Ob-la-di, Ob-la-da 15 154 3 *pp* *f* 1 2

163 Sgt. Pepper's Lonely Hearts Club Band *ff*

181

191 Suddenly Slow, Almost Half-time



199 Hey Jude

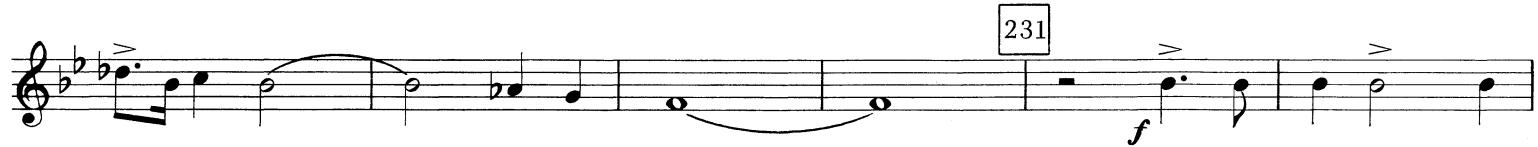
6



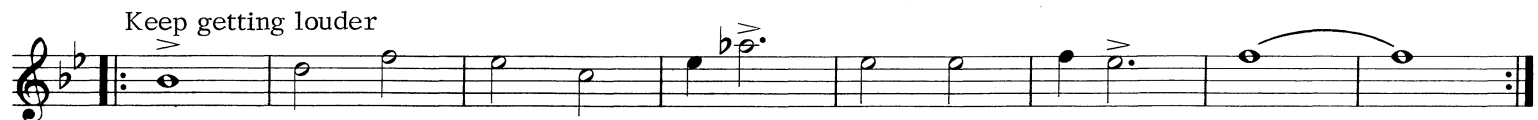
215



231



Keep getting louder



247



(d = d)



259



271

