

2nd CLARINET IN B \flat

Sixteen Chorales
by

J. S. Bach

Compiled and Arranged

by

MAYHEW LAKE

For Military Band, Woodwind Ensemble, Saxophone Ensemble, Brass Ensemble, String Ensemble, or Ensemble of Various Instruments

Any one of these instrumental groups may serve as an accompaniment to Four-Part Chorus of Mixed Voices (HL50299350)

G. SCHIRMER, Inc.

DISTRIBUTED BY
HAL•LEONARD•
CORPORATION

7777 W. BLUEMOUND RD. P.O. BOX 13819 MILWAUKEE, WI 53213

1. Wie schön leuchtet der Morgenstern

O Morning Star! how fair and bright

2nd Clarinet in B \flat
(Alto Part)

J. S. Bach

8va when brass section plays

2. Gieb, dass ich thu' mit Fleiss

And grant me, Lord, to do

J. S. Bach

8va when brass section plays

3. Ach wie flüchtig

O how cheating

J. S. Bach

8va when brass section plays

4. Ach Gott, wie manches Herzeleid

O Lord! how many miseries

J. S. Bach

8va when brass section plays

5. Jesu, nimm dich deiner Glieder

Jesu, guard and guide Thy members

J. S. Bach

8va when brass section plays

6. All' solch' dein' Güt' wir preisen

To Christ our peace is owing

J. S. Bach

8va when brass section plays

7. Es ist genug; so nimm, Herr, meinen Geist

O God, my Life, in mercy shine on me

J. S. Bach

8va when brass section plays

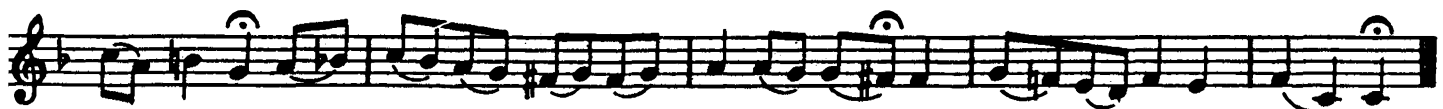
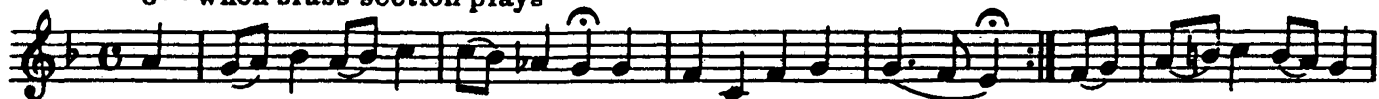


8. Es ist das Heil uns kommen her

Salvation hath come down to us

J. S. Bach

8va when brass section plays

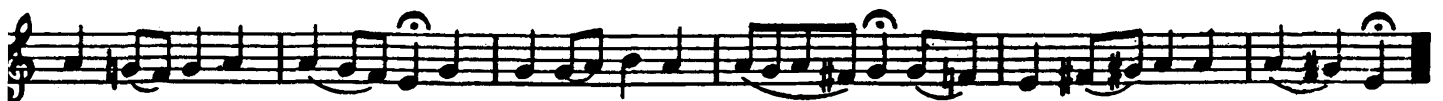


9. Auf meinen lieben Gott

O whither shall I flee

J. S. Bach

8va when brass section plays



10. Mache dich, mein Geist, bereit

Rise, my soul, to watch

J. S. Bach

8va when brass section plays

The first staff begins with a treble clef, a key signature of one sharp (F#), and a common time signature (C). The melody consists of eighth and sixteenth notes, with some notes beamed together. The second staff continues the melody, ending with a double bar line and repeat dots.

11. Jesu, der du meine Seele

Jesu! Who in sorrow dying

J. S. Bach

8va when brass section plays

The first staff begins with a treble clef, a key signature of one sharp (F#), and a common time signature (C). The melody features a mix of eighth and sixteenth notes. The second staff continues the piece, ending with a double bar line and repeat dots.

12. Du Lebensfürst, Herr Jesu Christ

Thou Prince of Life, O Christ our Lord

J. S. Bach

8va when brass section plays

The first staff begins with a treble clef, a key signature of one sharp (F#), and a 3/4 time signature. The melody is composed of eighth and sixteenth notes. The second and third staves continue the melody, with the third staff ending with a double bar line and repeat dots.

13. Alleluia, dess soll'n wir Alle froh sein
Alleluia, we may be filled with gladness

J. S. Bach

8va when brass section plays

Two staves of musical notation for the 2nd Clarinet in B \flat part of 'Alleluia'. The first staff begins with a treble clef, a key signature of two flats (B \flat and E \flat), and a common time signature (C). The melody consists of eighth and sixteenth notes, with some notes beamed together. The second staff continues the melody, ending with a double bar line.

14. Erhalt uns in der Wahrheit
Thy Truth, which never varies

J. S. Bach

8va when brass section plays

Two staves of musical notation for the 2nd Clarinet in B \flat part of 'Erhalt uns in der Wahrheit'. The first staff begins with a treble clef, a key signature of one flat (F \flat), and a 2/4 time signature. The melody is primarily quarter notes. The second staff continues the melody, ending with a double bar line.

15. Ei nun, mein Gott, so fall' ich dir
Then, O my God, with joy I cast

J. S. Bach

8va when brass section plays

Three staves of musical notation for the 2nd Clarinet in B \flat part of 'Ei nun, mein Gott'. The first staff begins with a treble clef, a key signature of one sharp (F \sharp), and a common time signature (C). The melody features a mix of eighth and sixteenth notes. The second and third staves continue the melody, with the third staff ending with a double bar line.

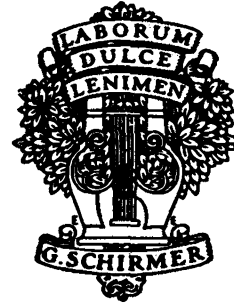
16. Wachet auf, ruft uns die Stimme

"Sleepers, wake!" a voice is sounding

J. S. Bach

8va when brass section plays

The image displays a musical score for the 2nd Clarinet in B-flat part of the chorale 'Wachet auf, ruft uns die Stimme' by J.S. Bach. The score is written on eight staves of five-line music paper. The key signature is one flat (B-flat), and the time signature is common time (C). The notation includes various rhythmic values such as quarter, eighth, and sixteenth notes, as well as rests and accidentals. The first staff begins with the instruction '8va when brass section plays'. The score concludes with a double bar line and repeat dots at the end of the eighth staff.



U.S. \$3.95

ISBN 0-7935-3967-6



HL50351650

G. SCHIRMER, Inc.

DISTRIBUTED BY
HAL LEONARD
CORPORATION

7777 W. BLUEMOUND RD. P.O. BOX 13819 MILWAUKEE, WI 53213