

Scenes from "The Nutcracker"

3rd TROMBONE

By Peter Ilyich Tchaikovsky (1840-1893)

Arranged by Michael Story (ASCAP)

"March"
Moderately fast ♩ = 126

Musical notation for the beginning of the "March" section, measures 1-17. The key signature is one flat (B-flat), and the time signature is 4/4. The music features a bass clef and includes dynamic markings such as *f* and *mf*. Measure numbers 1-7, 9-15, and 17 are indicated. There are also boxed measure numbers 9 and 17.

Musical notation for the "March" section, measures 19-20. The key signature is one flat, and the time signature is 4/4. The music features a bass clef and includes dynamic markings such as *mf*. Measure numbers 19-20 are indicated.

Musical notation for the "March" section, measures 25-32. The key signature is one flat, and the time signature is 4/4. The music features a bass clef and includes dynamic markings such as *f*. Measure numbers 25-32 are indicated. There are also boxed measure numbers 25 and 32.

Musical notation for the "March" section, measures 33-38. The key signature is one flat, and the time signature is 4/4. The music features a bass clef and includes dynamic markings such as *f*. Measure numbers 33-38 are indicated. There are also boxed measure numbers 33 and 38.

Musical notation for the "March" section, measures 39-40. The key signature is one flat, and the time signature is 4/4. The music features a bass clef and includes dynamic markings such as *mf* and *f*. Measure numbers 39-40 are indicated.

"Dance of the Sugar Plum Fairy"

41 Moderato ♩ = 112

Musical notation for the beginning of the "Dance of the Sugar Plum Fairy" section, measures 41-62. The key signature is one flat, and the time signature is 3/4. The music features a bass clef and includes dynamic markings such as *mf*. Measure numbers 41-45, 46-53, 54-61, and 62 are indicated. There are also boxed measure numbers 41, 46, 54, and 62.

Musical notation for the "Dance of the Sugar Plum Fairy" section, measures 64-73. The key signature is one flat, and the time signature is 3/4. The music features a bass clef and includes dynamic markings such as *mf* and *rit.*. Measure numbers 64-73 are indicated.

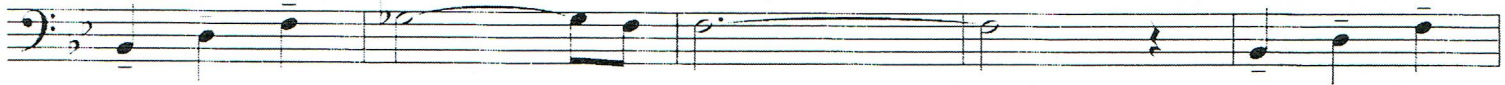
"Waltz of the Flowers"

70 Bright waltz tempo ♩ = 156-162

Musical notation for the beginning of the "Waltz of the Flowers" section, measures 70-77. The key signature is one flat, and the time signature is 3/4. The music features a bass clef and includes dynamic markings such as *f* and *mf*. Measure numbers 70-77 are indicated.

Musical notation for the "Waltz of the Flowers" section, measures 78-85. The key signature is one flat, and the time signature is 3/4. The music features a bass clef and includes dynamic markings such as *f*. Measure numbers 78-85 are indicated. There are also boxed measure numbers 78 and 85.

86



94



102



f



104

110



114-117

121 Moderately slow $\text{♩} = 80$



119

122-125

"Trepak"
127 Bright $\text{♩} = 132$



f

135



132



137

143



142

mf

1. 2.

153

f

157

161

169

170

177 accel.

174

179

185 ♩ = 144

184

189

ff *fp* *ff*